

API **iSCAN**LITE

3D Blue Laser Scanner

Small is the Brand-new Big

570 g

Net Weight

ISO

ISO 17025

0.020 mm

Accuracy





01

PRODUCT INTRODUCTION



Single-handed Control

Full-metal housing

iScanlite's full-metal housing provides solid protection

Sturdy materials

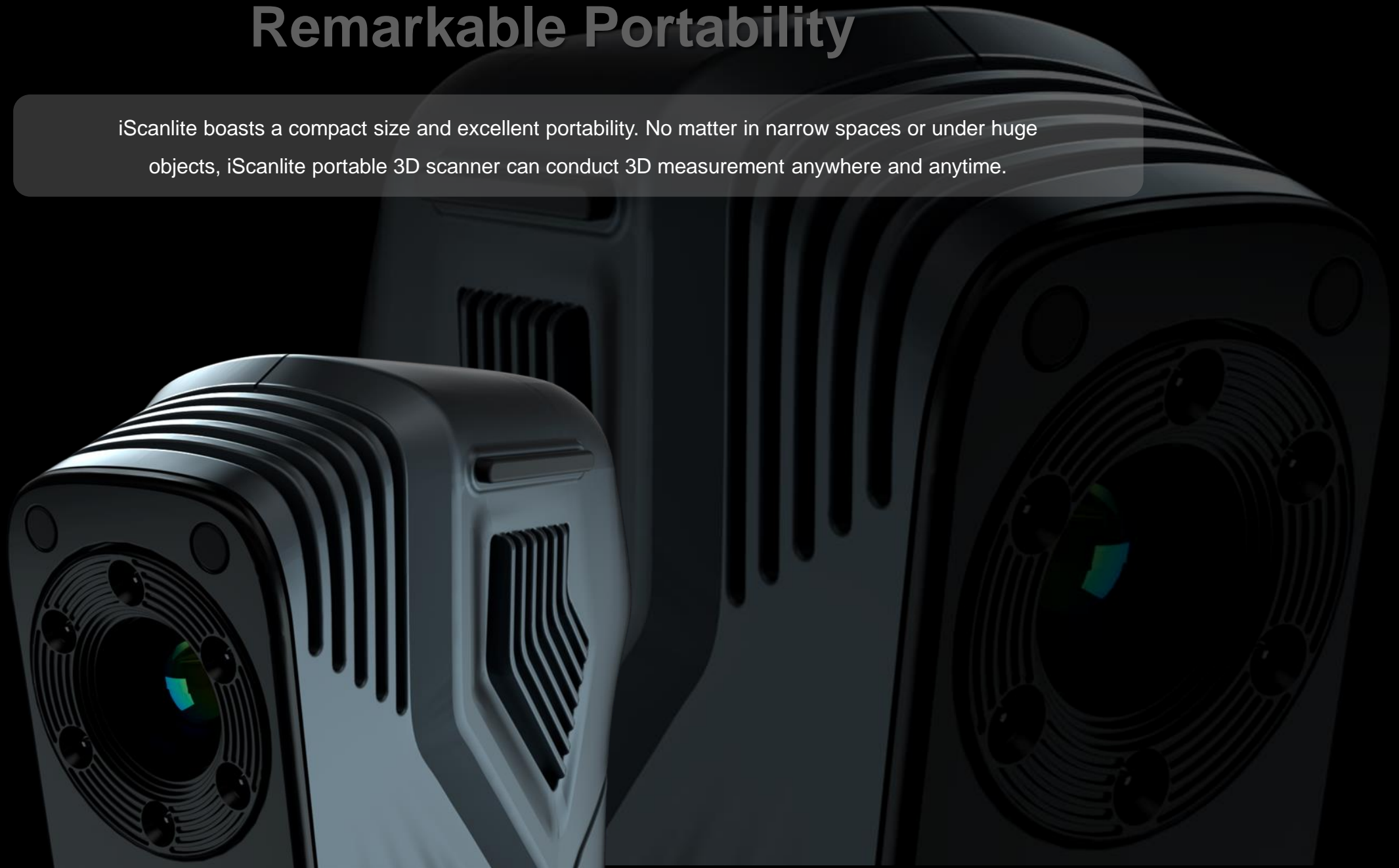
Its sturdy materials ensure extraordinary durability

Scanning with one hand

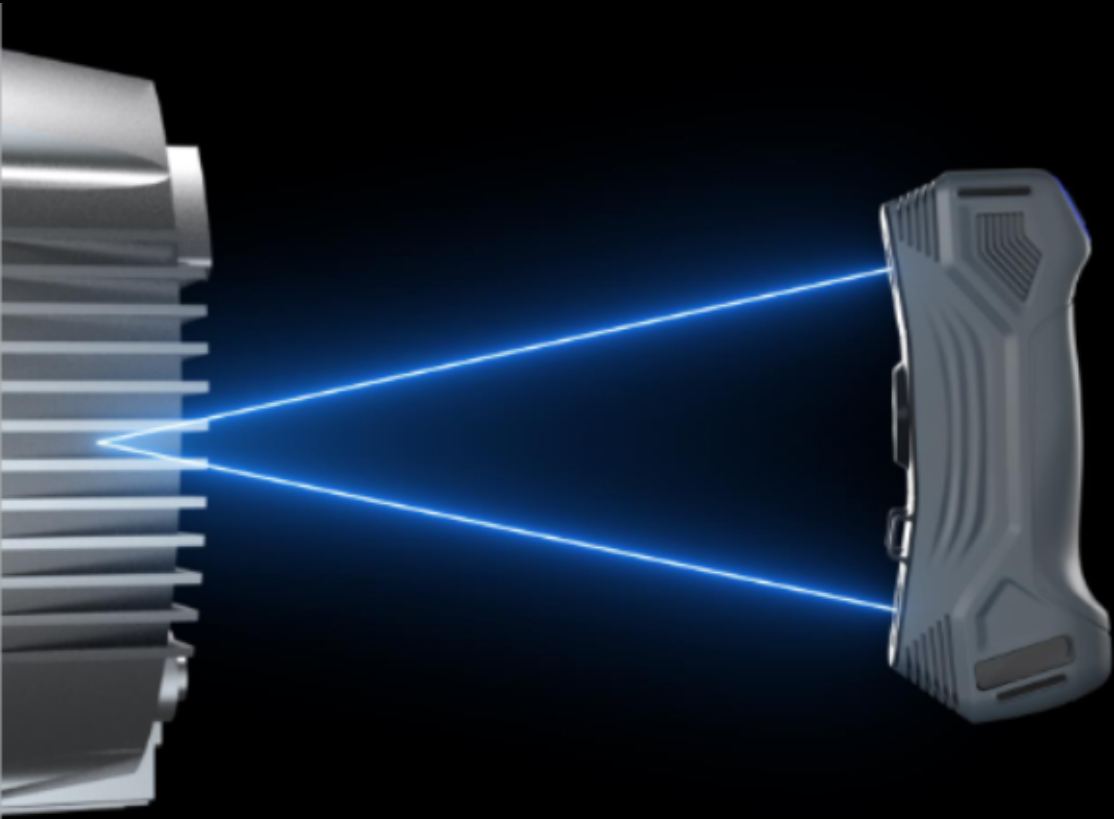
Weighted only **570 g** and sized **203 × 80 × 44 mm**

Remarkable Portability

iScanlite boasts a compact size and excellent portability. No matter in narrow spaces or under huge objects, iScanlite portable 3D scanner can conduct 3D measurement anywhere and anytime.



Narrow-space Measuring Booster



Compared with its competitors, iScanlite has a much shorter camera distance of **130 mm** which forms a steeper view angle to 3D scan narrow spaces.

Therefore, iScanlite is more capable of capturing accurate and complete data in hard-to-reach areas like deep grooves and ensures users capture full-field data.



Detail, Everywhere



HD Camera

With its built-in HD cameras and three scanning modes, it realizes high-precision scanning with an accuracy up to **0.020 mm**

It can accurately capture the 3D data of objects with complex surfaces or in confined areas.



iScanlite can 3D scan objects with a rate up to **1.25 million measurement/s** thanks to its sophisticated algorithm and a camera frame rate higher than most of its competitors. It is designed to offer users a smooth and efficient 3D digitizing experience.

7 blue laser crosses

Ultra-fast scanning

7 parallel blue laser lines

Hyperfine scanning

1 blue laser line

Deep hole scanning

Smooth 3D Experience

Automated 3D Measurement

It can be paired with API's automated 3D measurement system to achieve non-stop measurements.





02

TECHNICAL SPECIFICATION

TECHNICAL SPECIFICATIONS

Type		iScanlite
Scan mode	Ultra-fast scanning	7 blue laser crosses
	Hyperfine scanning	7 blue parallel laser lines
	Deep hole scanning	1 extra blue laser line
Accuracy ⁽¹⁾		Up to 0.020 mm
Scanning rate		Up to 1,250,000 measurements/s
Scanning area		Up to 650 mm × 550 mm
Laser class		Class II (eye-safe)
Resolution		Up to 0.020 mm
Volume accuracy ⁽²⁾	Standard	0.015 mm + 0.035 mm/m
	Paired with MSCAN-L15	0.015 mm + 0.015 mm/m
Stand-off distance		300 mm
Depth of field		550 mm
Output formats		pj3, asc, igs, txt, mk2, umk, stl, ply, obj
Operating temperature range		-10°C - 40°C
Interface mode		USB 3.0
Dimensions		203 mm × 80 mm × 44 mm
Weight		570 g
Patents		CN204329903U, CN104501740B, CN204854633U, CN204944431U, CN204902788U, CN105068384B, CN105049664B, CN204902784U, CN204902785U, CN106403845B, CN110030946B, CN111833392A, CN212300269U, CN211904059U, CN211696268U, CN306053019S, CN212606697U, CN111932465A, CN111694665A, CN306321502S, EP3392831A4

(1) ISO 17025 accredited: Based on VDI/VDE 2634 Part 3 standard and JJF 1951 specification, probing error (size) (PS) performance is evaluated.

(2) ISO 17025 accredited: Based on VDI/VDE 2634 Part3 standard and JJF 1951 specification, sphere spacing error (SD) performance is evaluated.



03

APPLICATIONS

VAST APPLICATIONS



Aerospace

Metrology-grade 3D scanning for product development and MRO workflow.

Automotive

Enhance work efficiency with precise 3D measurement instruments.



Energy & Heavy Industry

Empower the development and upgrading of the industry.



Rail Transport and Shipbuilding

Accurate measurement results for product development, virtual assembly, and more.

Mold

Optimize mold design, mode corrosion detection, and archiving.

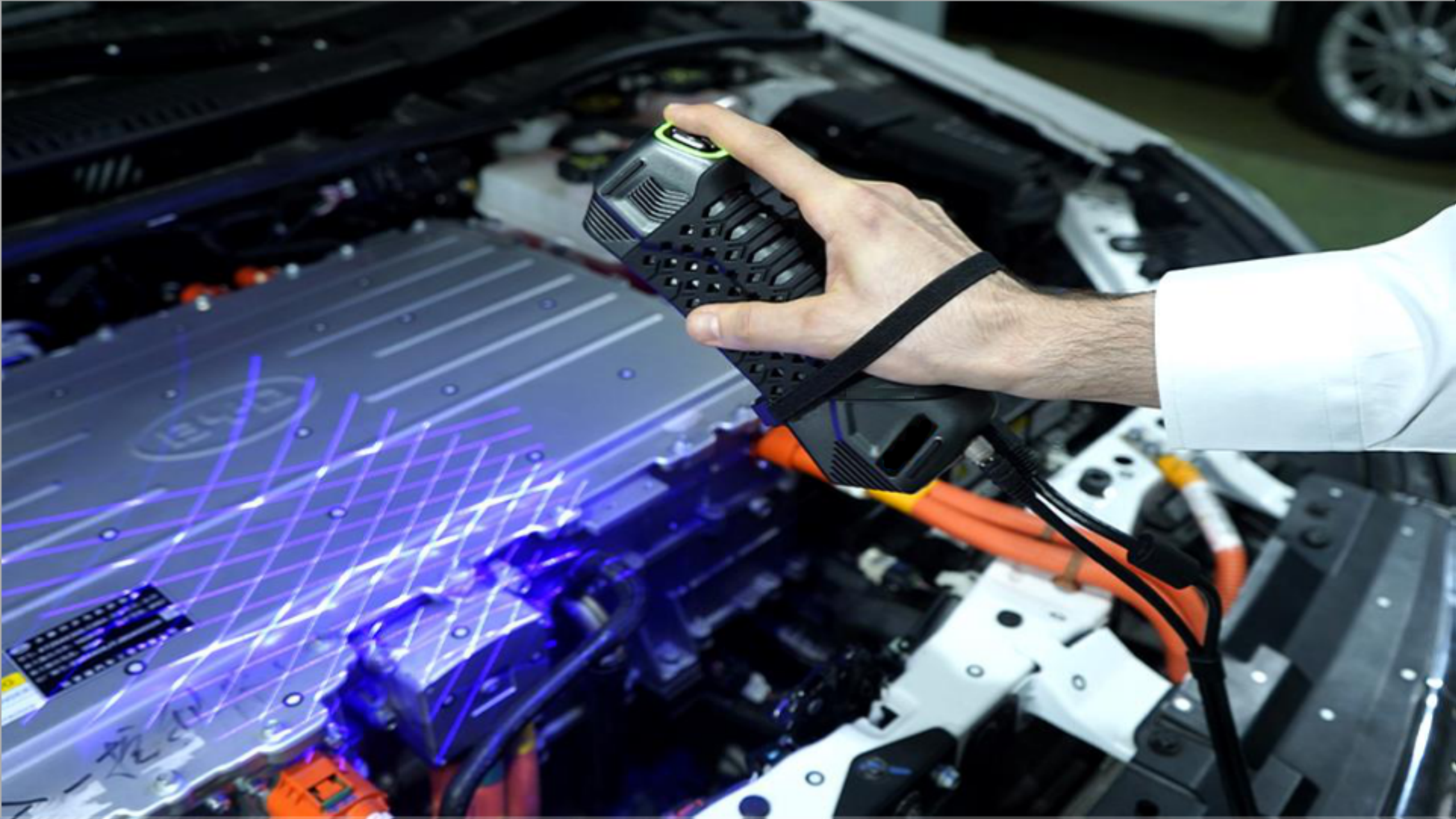


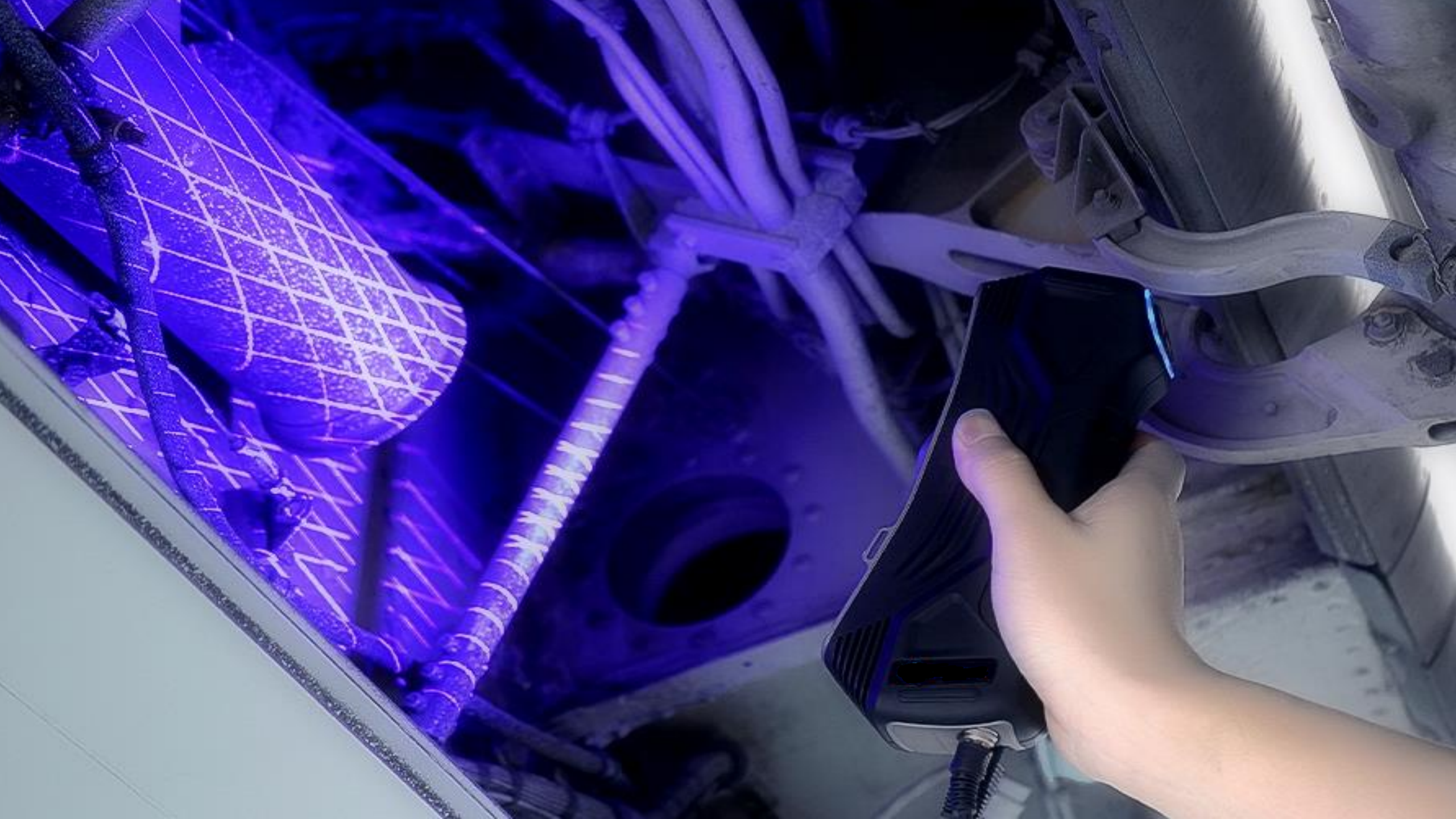
Non-industry

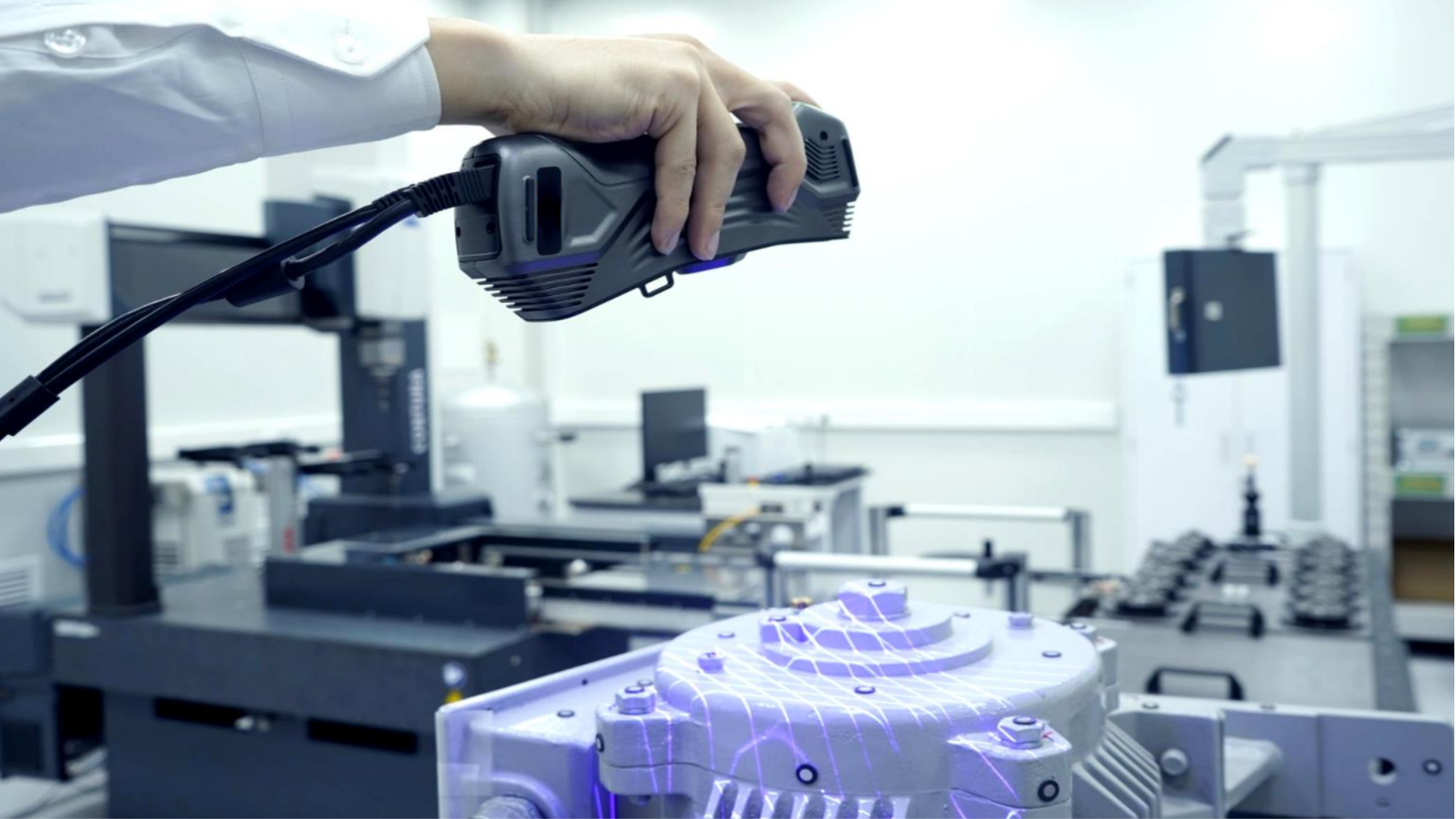
3D digitization for industries including medical field, architecture, and more.
















INNOVATION MEETS DIGITIZATION

 +91 20 48607480

 india@apimetrology.com

 0091 -8484889078

 www.apimetrology.com

